

2PC 300# FULL PORT BALL VALVE, FLANGED

DESIGN FEATURES:

- Steam rating:150 psi WSP
- ISO 5211 Actuator Mounting Pad
- Blow-out-proof stem design
- Anti-Static Device
- Adjustable Stem Packing
- Locking Device
- Body:ASTM A351 Gr.CF8M For TC-5300
ASTM A216 Gr.WCB For TC-5400
- ME-PTFE SEAL KITS :REPLACES PTFE,RPTFE AND FPA
LOW DEFORMATION UNDER LOAD
LOW PERMEATION
- Temperature Rating:-45.5°C (-50°F) to 246°C (475°F)
- Long Cycle Life
- ANSI B16.5 B16.10 and B16.34 Full Compliance
- API 607 5th Edition FIRE SAFE APPROVAL
- TEST STANDARD:API 598
- NACE MR-0175 FULL COMPLIANCE
- Vacuum Service to 29" Hg

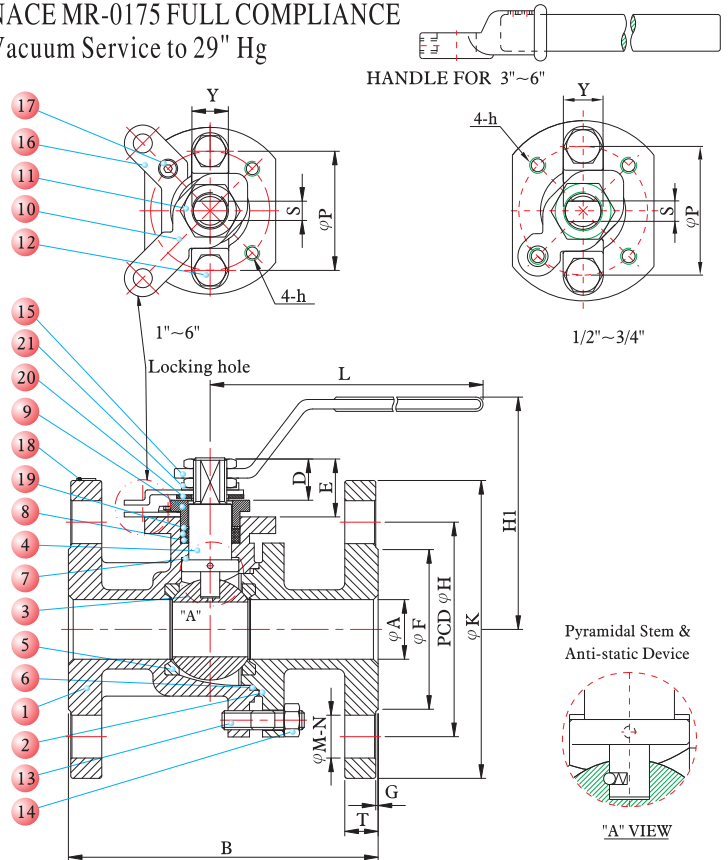
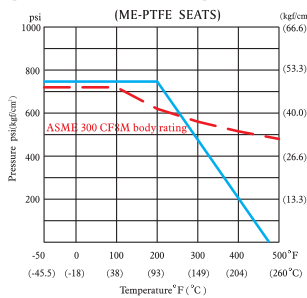


MATERIALS LIST

NO.	PART NAME	MATERIAL		QTY
		STAINLESS STEEL	CARBON STEEL	
1	BODY	ASTM A351 Gr.CF8M	ASTM A216 WCB	1
2	CAP	ASTM A351 Gr.CF8M	ASTM A216 WCB	1
3	BALL	ASTM A351 Gr.CF8M	ASTM A351 Gr.CF8M	1
4	STEM	ASTM A276 Gr.316	ASTM A276 Gr.316	1
5	SEAT	*ME-PTFE	*ME-PTFE	2
6	GASKET	GRAFOIL	GRAFOIL	1
7	THRUST WASHER	*ME-PTFE	*ME-PTFE	1
8	PACKING	GRAFOIL	GRAFOIL	1
9	GLAND	ASTM A351 Gr.CF8	ASTM A351 Gr.CF8	1
10	STOPPER	SS304	SS304	1
11	HANDLE NUT	SS304	SS304	2
12	GLAND BOLT	ASTM A193 Gr.B8	ASTM A193 Gr.B8	2
13	STUD BOLT	ASTM A193 Gr.B8	ASTM A193 Gr.B7M	4~10
14	SET NUT	ASTM A194 Gr.8	ASTM A194 Gr.2HM	4~10
15	HANDLE	SS304	SS304	1
16	LOCKING PLATE	SS304	SS304	1
17	SET BOLT	SS304	SS304	2
18	NAME PLATE	SS304	SS304	1
19	RING	SS304	SS304	1
20	BEARING	NYLON	NYLON	1
21	LOCK WASHER	SS304	SS304	1

*ME-PTFE IS Molecularly Enhanced PTFE

PRESSURE TEMPERATURE RATINGS



DIMENSIONS

SIZE	A		B		D		E		F		G		H		H1		K		L		T		M		N	P		S		h	Y	CV Factor	Weight		
	inch	mm	inch	mm	inch	mm	inch	mm	inch	mm	inch	mm	inch	mm	inch	mm	inch	mm	inch	mm	inch	mm	inch	mm		inch	mm	inch	mm				inch	mm	Kg
1/2"	15	0.59	15.0	5.50	139.7	0.81	20.5	1.02	26.0	1.38	35.1	0.06	1.6	2.62	66.6	3.35	85.2	3.75	95.3	6.69	170	0.50	12.7	0.63	15.9	4	1.65	42	0.31	8	M5*P0.8	M14*P2.0	26	2.57	5.67
3/4"	20	0.79	20.0	6.00	152.4	0.81	20.5	1.02	26.0	1.69	42.9	0.06	1.6	3.25	82.6	3.39	86.2	4.62	117.4	6.69	170	0.56	14.3	0.75	19.1	4	1.65	42	0.31	8	M5*P0.8	M14*P2.0	55	3.64	8.03
1"	25	0.98	25.0	6.50	165.1	0.87	22.0	1.28	32.5	2.00	50.8	0.06	1.6	3.50	88.9	4.04	102.7	4.88	124.0	6.69	170	0.62	15.8	0.75	19.1	4	1.97	50	0.39	10	M5*P0.8	M16*P2.0	110	4.90	10.80
1-1/4"	32	1.26	32.0	7.00	177.8	0.87	22.0	1.28	32.5	2.50	63.5	0.06	1.6	3.88	98.6	4.23	107.5	5.25	133.4	6.69	170	0.69	17.6	0.75	19.1	4	1.97	50	0.39	10	M6*P1.0	M16*P2.0	180	6.54	14.42
1-1/2"	40	1.50	38.0	7.50	190.5	1.04	26.5	1.70	43.3	2.88	73.2	0.06	1.6	4.50	114.3	4.95	125.8	6.12	155.4	9.84	250	0.75	19.1	0.87	22.2	4	2.76	70	0.39	10	M6*P1.0	M16*P2.0	270	9.59	21.15
2"	50	1.97	50.0	8.50	215.9	1.04	26.5	1.70	43.3	3.62	91.9	0.06	1.6	5.00	127.0	5.26	133.5	6.50	165.1	9.84	250	0.81	20.6	0.75	19.1	8	2.76	70	0.39	10	M8*P1.25	M16*P2.0	500	12.50	27.15
2-1/2"	65	2.56	65.0	9.50	241.3	1.04	26.5	1.70	43.3	4.12	104.9	0.06	1.6	5.88	149.4	5.87	149.0	7.50	190.5	14.37	365	0.94	23.9	0.87	22.2	8	2.76	70	0.55	14	M8*P1.25	M22*P2.5	800	19.30	42.56
3"	80	3.15	80.0	11.12	282.4	1.44	36.5	2.26	57.3	5.00	127.0	0.06	1.6	6.62	168.2	6.92	175.7	8.25	209.6	21.50	546	1.06	26.9	0.87	22.2	8	4.02	102	0.55	14	M10*P1.5	M22*P2.5	1150	31.50	69.48
4"	100	3.94	100.0	12.00	304.8	1.44	36.5	2.26	57.3	6.19	157.2	0.06	1.6	7.88	200.2	7.81	198.4	10.00	254.0	21.50	546	1.19	30.3	0.87	22.2	8	4.02	102	0.55	14	M10*P1.5	M22*P2.5	2120	46.50	102.5
6"	150	5.91	150.0	15.90	403.4	1.67	42.5	2.60	66.0	8.50	215.9	0.06	1.6	10.62	269.8	10.37	263.5	12.50	317.5	40.63	1032	1.38	35.1	0.87	22.2	12	4.92	125	0.79	20	M12*P1.75	M30*P3.5	5100	97.00	213.89
8"	200	7.87	200.0	19.75	501.6	1.88	47.8	2.86	72.7	10.62	269.7	0.06	1.6	13.00	330.2	11.58	294.2	15.00	381.0	40.94	1040	1.62	41.1	1.00	25.4	12	5.51	140	1.29	33	M16*P2.0	M39*P4.0	9400	172.3	379.93